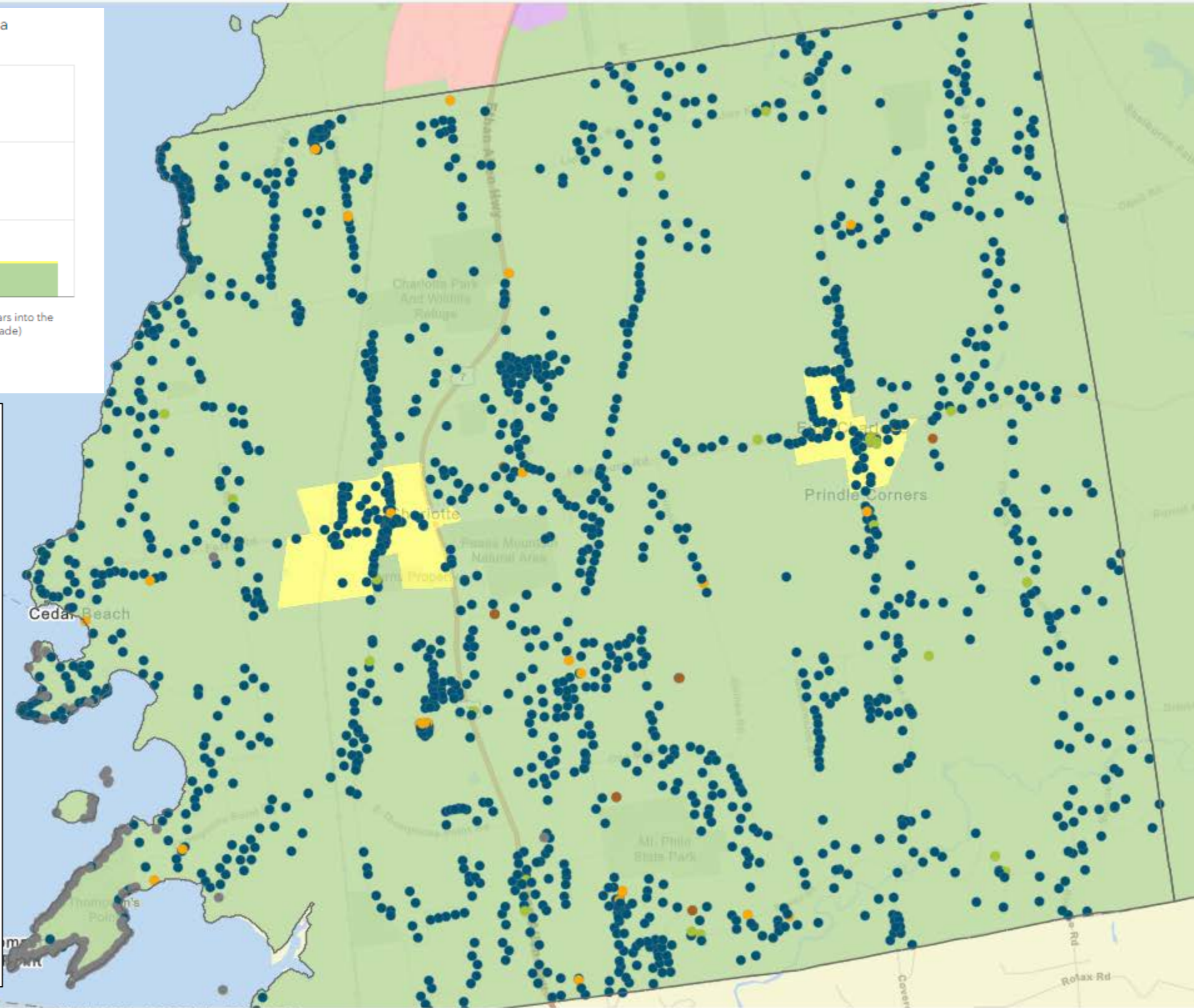
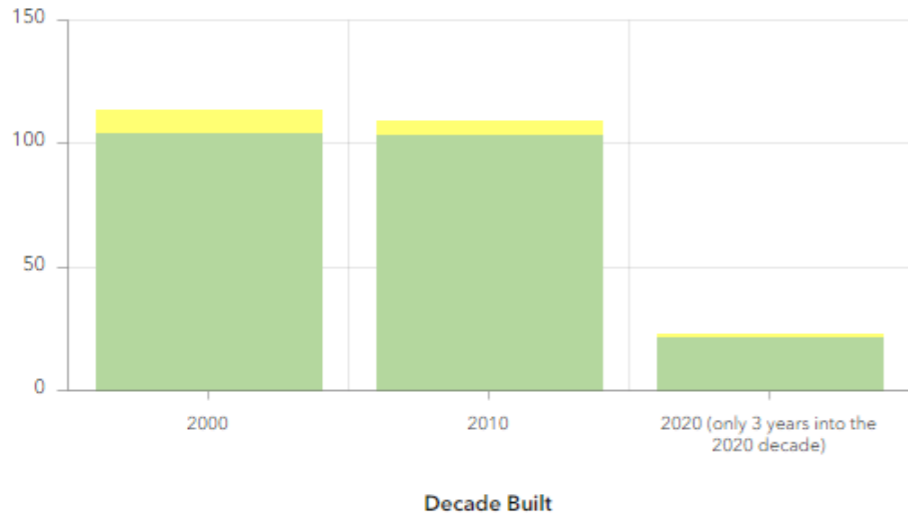




Chittenden County Housing Dashboard

To view one table on your screen hover over the top right corner of a chart frame to reveal arrows that will allow you to expand the chart. Click the arrows again to minimize the chart.

Housing Units Built by Decade and Regional Planning Area



This map shows where new housing has been built in Charlotte according to the future land use areas of the county's regional plan.

Village areas shown in yellow are planned for 80% of the county's growth but contain only 6% of the Town's new housing since 2000. In contrast, the county's goal is that less than 20% of growth occurs in the rural area, but in Charlotte 94% of new homes since 2000 were built in rural areas. This also conflicts with the Town Plan goal of encouraging compact settlements in historic locations surrounded by open countryside.

The Town is exploring how to reverse this trend by supporting concentration of development in both the East and West Villages to better protect rural landscapes valued by the community.

Legend

Chittenden County Municipalities



Housing

- SINGLE HOUSING UNIT
- MULTIUNIT
- MOBILE HOME
- SEASONAL CAMP
- DEMO
- ACCESSORY DWELLING UNIT
- GROUP QUARTERS

Regional Planning Area

- Center
- Metro
- Suburban
- Enterprise
- Village
- Rural

1 km
5,000 ft